

Twin WAN Router Setup Tutorials

By WINS International LLC, dba XiNCOM – Client Care Center

Basic Configuration Guide – LAN Setup

Configuring your Twin WAN Router to integrate with your LAN

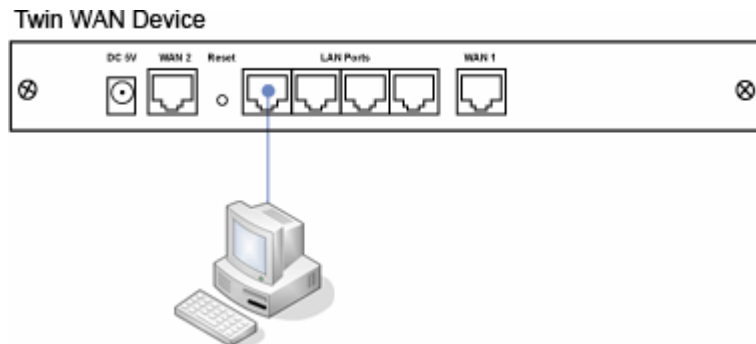
Before setting up your Twin WAN device for dual broadband connections, you must first configure the router to integrate with your existing LAN. This will require logging into the Twin WAN device's console interface and setting your LAN parameters in the **Basic Setup** section. Follow the instructions below to configure the Twin WAN device for your LAN:

Step 1 – Power up the Twin WAN device

Remove the Twin WAN device and the accompanying 5-volt power adapter from its packaging. Plug the power adapter to any available electrical outlet (*See note*). Connect the power adapter to the Twin WAN device. The Twin WAN device will power on and initiate its boot sequence. The boot sequence may take up to 5 seconds.

Step 2 – Network a single PC to the Twin WAN device

Network a single PC to the Twin WAN device. Connect a single CAT-5 Ethernet cable from the PC's Ethernet port to any of the router's LAN ports located toward the rear of the Twin WAN device.



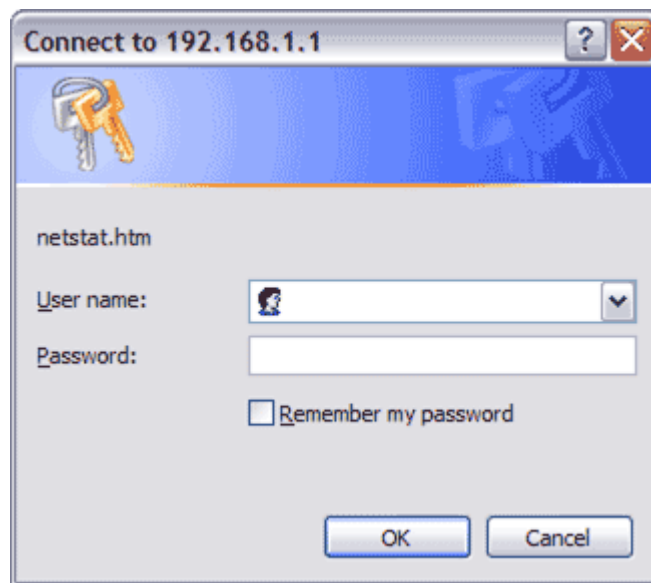
NOTE: It is recommended to always use a surge protector when connecting any computer or networking device to an electrical power source.

Twin WAN Router Setup Tutorials

By WINS International LLC, dba XiNCOM – Client Care Center

Step 3 – Open the router's Setup Console

Open any web browser from the PC that is connected to the Twin WAN device. In the address bar, input the Twin WAN device's default IP address – 192.168.1.1. Press **Enter** or the **Go** icon to bring up the console interface. The router will prompt you for a user name and password. The Twin WAN device's default user name is **admin**. Leave the password input field blank and submit. This will log you into the router's console interface.



Step 4 – Configure LAN parameters in Basic Setup

On the left side of the console interface, click on **Basic Setup** and then select **LAN & DHCP** from the sub-menu. The **LAN & DHCP** console interface will display various networking parameters that can be configured for your existing local area network such as setting a user-defined IP address for your Twin WAN device and DHCP options.

Twin WAN Router Setup Tutorials

By WINS International LLC, dba XiNCOM – Client Care Center

If you require the use of the Twin WAN device's DHCP server option you will need to change all the values on the page to reflect the new address of the router. See example below.

LAN IP Configuration	
IP Address	<input type="text" value="192.168.0.1"/> (ex. xxx.xxx.xxx.xxx)
Subnet Mask	<input type="text" value="255.255.255.0"/> (ex. 255.255.255.0)
DHCP Server Configuration	
DHCP Server Setup	<input type="radio"/> Enable <input checked="" type="radio"/> Disable
Client Lease Time	<input type="text" value="60"/> Minutes
Client Default DNS	DNS 1, <input type="text" value="192.168.0.1"/> DNS 2, <input type="text" value="192.168.0.1"/>
DHCP IP Address Range	
Offered Range	<input type="text" value="192.168.0.10"/> ~ <input type="text" value="192.168.0.100"/> (ex. xxx.xxx.xxx.xxx)
Free Entries	99